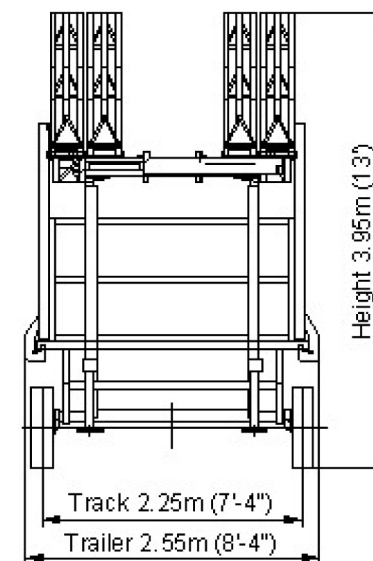
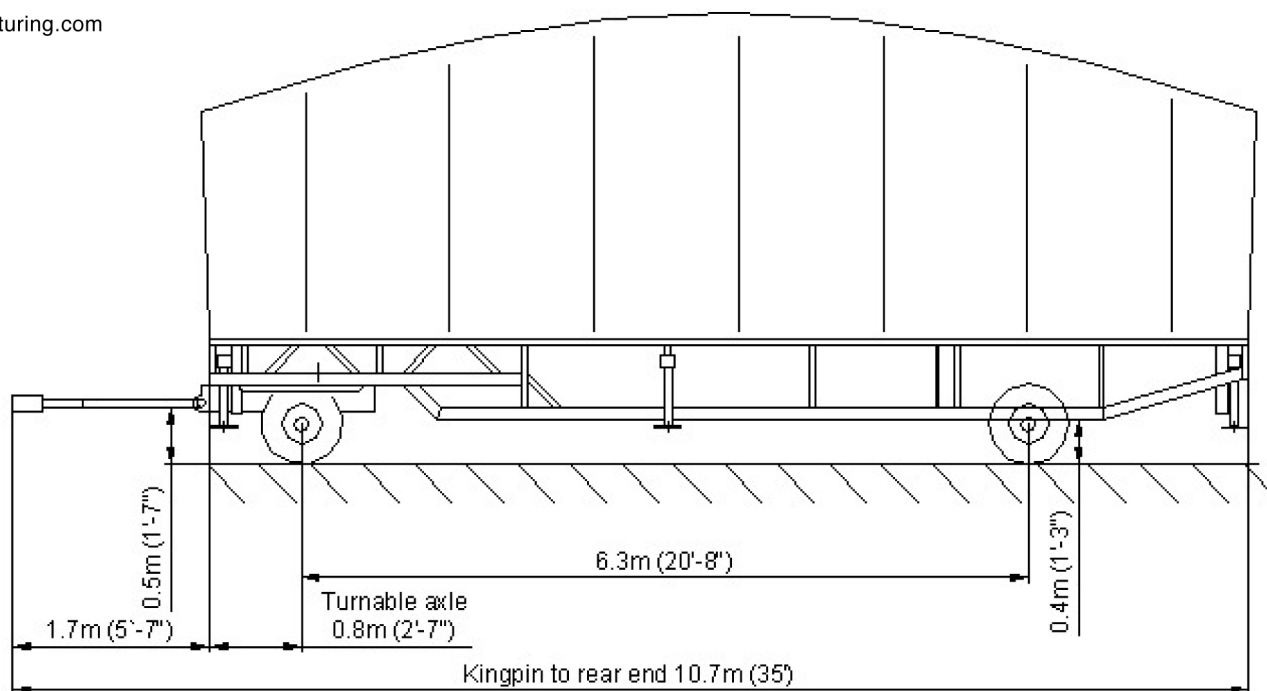




www.mobilestagemanufacturing.com
 100 Eads St. West Babylon, NY 11704
 (516) 882-5412
 Info@MobileStageManufacturing.com

Mass and Dimensions – Stagemobil XLR



Mass

kg

Lbs

Vehicle Mass	3500	7720
Net weight	3350	7386
Allowable Load on Axle	1800	3960

Standard: 2 axles

Note

1. Mass may vary depending of options.

Stage specifications subject
 To change without notice
 Figures are within inch or
 cm to actual size

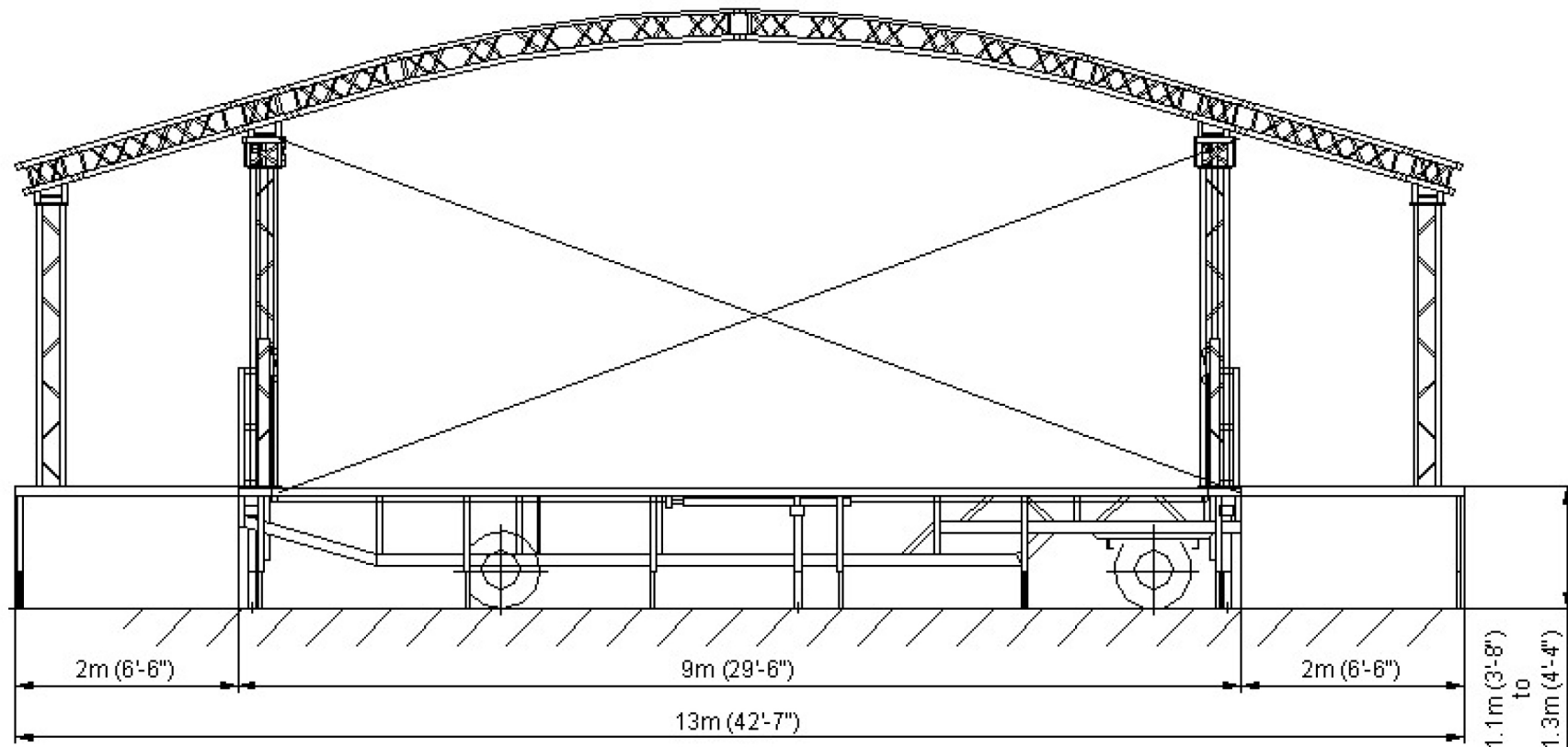
©2008 – Allrights reserved, Karl Eckart Fahrzeugbeu GmbH. Any and all forms of adaption or reproduction of this document including plans and drawings found herein, in whole or in part, are strictly forbidden without the written authorisation of Karl Eckart Fahrzeugbau GmbH.

Date: 2008-02-05
 Revision 0



www.mobilestagemanufacturing.com
100 Eads St. West Babylon, NY 11704
(516) 882-5412
Info@MobileStageManufacturing.com

Stagemobil XLR



Front View

Stage specifications subject
To change without notice
Figures are within inch or
cm to actual size

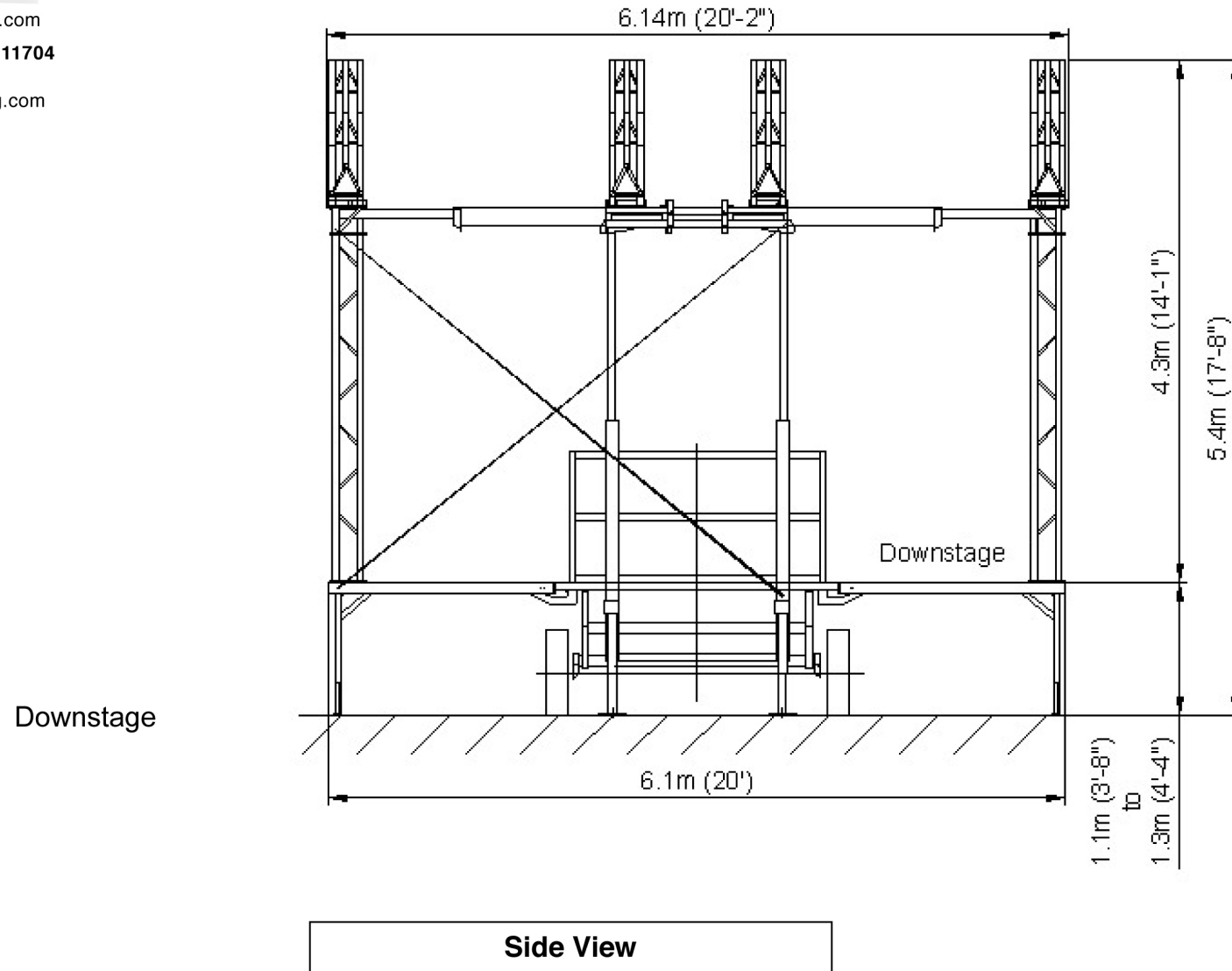
©2008 – Allrights reserved, Karl Eckart Fahrzeugbau GmbH. Any and all forms of adaption or reproduction of this document including plans and drawings found herein, in whole or in part, are strictly forbidden without the written authorisation of Karl Eckart Fahrzeugbau GmbH.

Date: 2008-02-05
Revision 0



www.mobilestagemanufacturing.com
100 Eads St. West Babylon, NY 11704
(516) 882-5412
Info@MobileStageManufacturing.com

Stagemobil XLR



Stage specifications subject
To change without notice
Figures are within inch or
cm to actual size

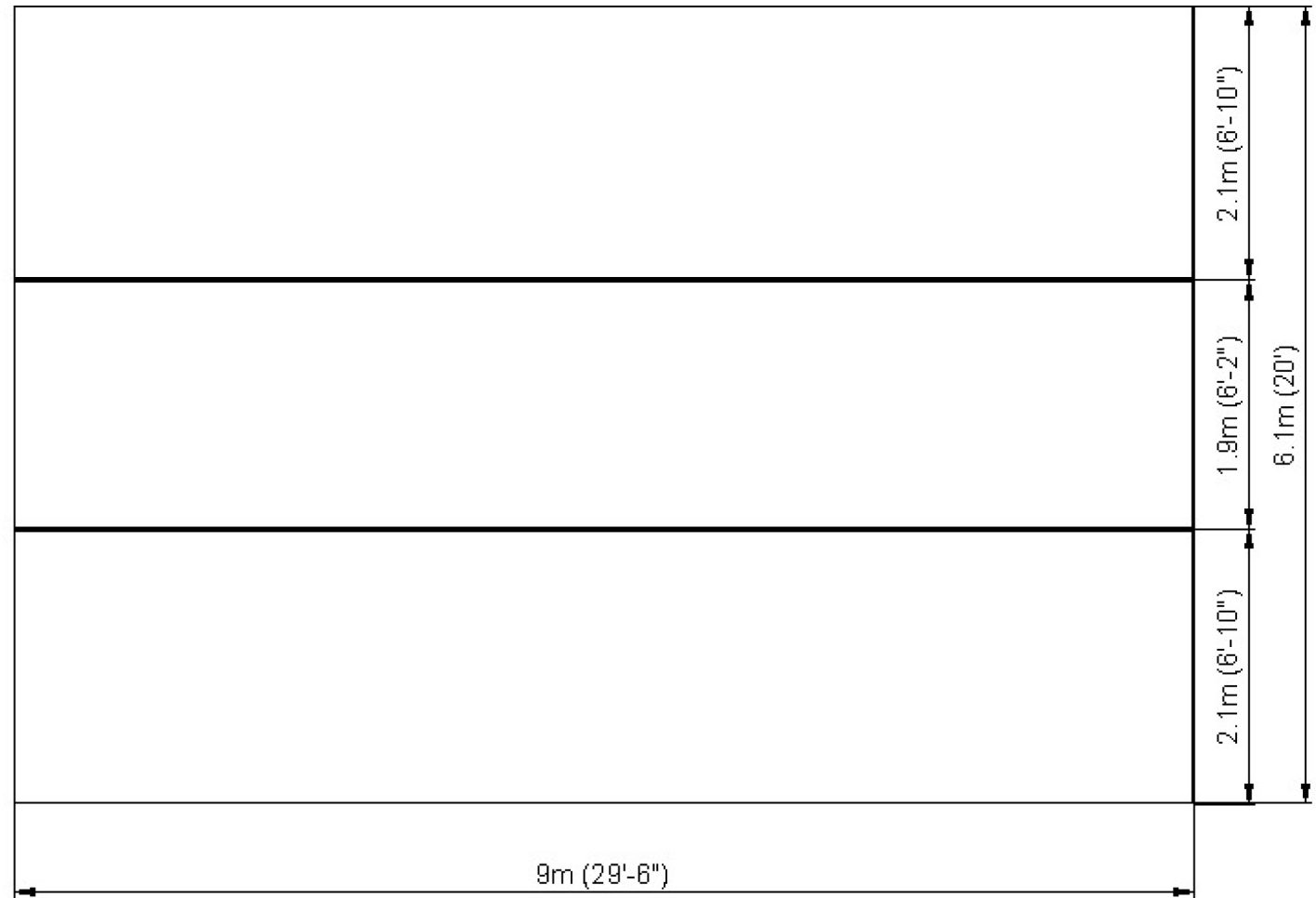
©2008 – All rights reserved, Karl Eckart Fahrzeugbau GmbH. Any and all forms of adaption or reproduction of this document including plans and drawings found herein, in whole or in part, are strictly forbidden without the written authorisation of Karl Eckart Fahrzeugbau GmbH.

Date: 2008-02-05
Revision 0



www.mobilestagemanufacturing.com
100 Eads St. West Babylon, NY 11704
(516) 882-5412
Info@MobileStageManufacturing.com

Stagemobil XLR



Downstage
Capacity: 100 lbs/ft² (5 kN/m²)

Floor View

Stage specifications subject
To change without notice
Figures are within inch or
cm to actual size

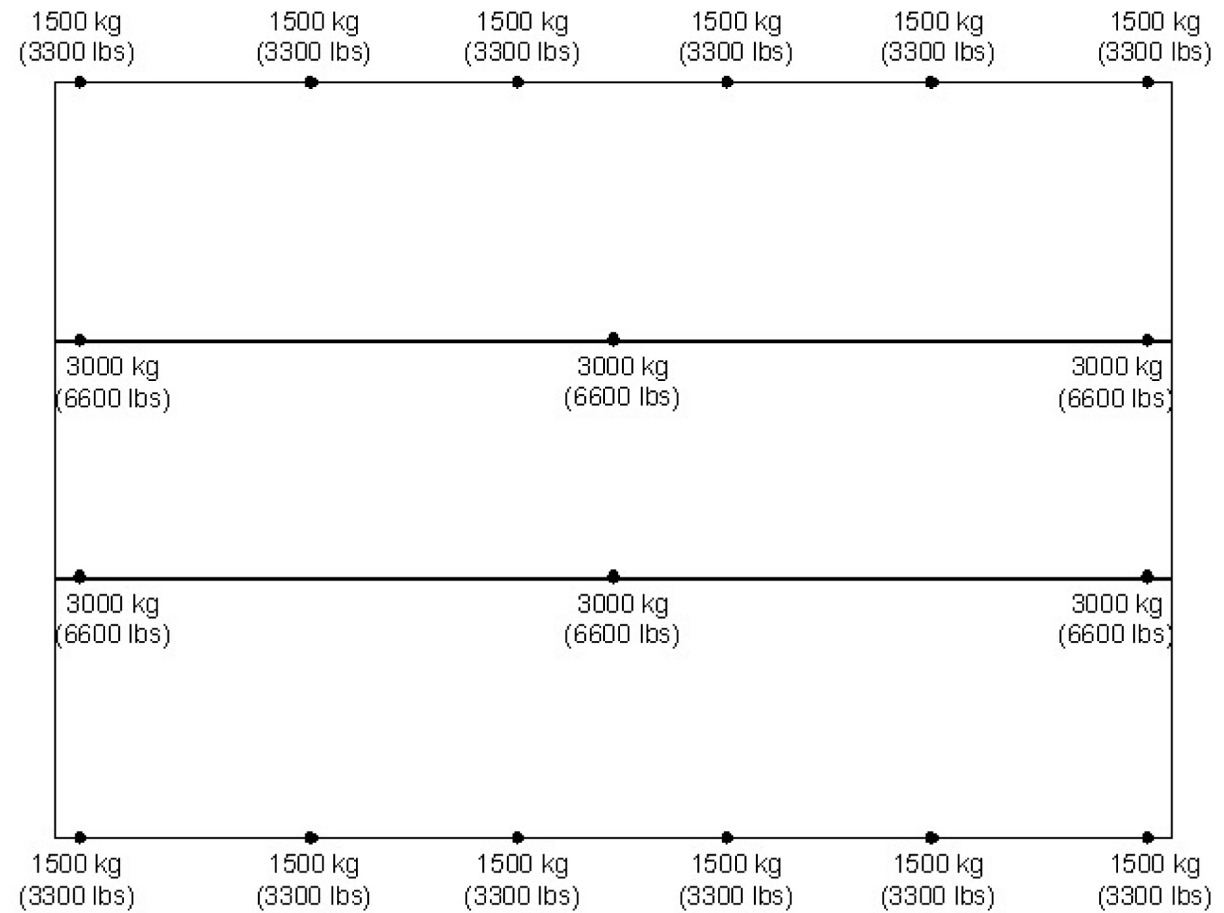
©2008 – Allrights reserved, Karl Eckart Fahrzeugbeu GmbH. Any and all forms of adaption or reproduction of this document including plans and drawings found herein, in whole or in part, are strictly forbidden without the written authorisation of Karl Eckart Fahrzeugbau GmbH.

Date: 2008-02-05
Revision 0



www.mobilestagemanufacturing.com
100 Eads St. West Babylon, NY 11704
(516) 882-5412
Info@MobileStageManufacturing.com

Stagemobil XLR



● Floor stabilizers, extensions and leveling jacks.
*Nominal specifications subject to change with notice.

Downstage

Ground Support Capacity

Stage specifications subject
To change without notice
Figures are within inch or
cm to actual size

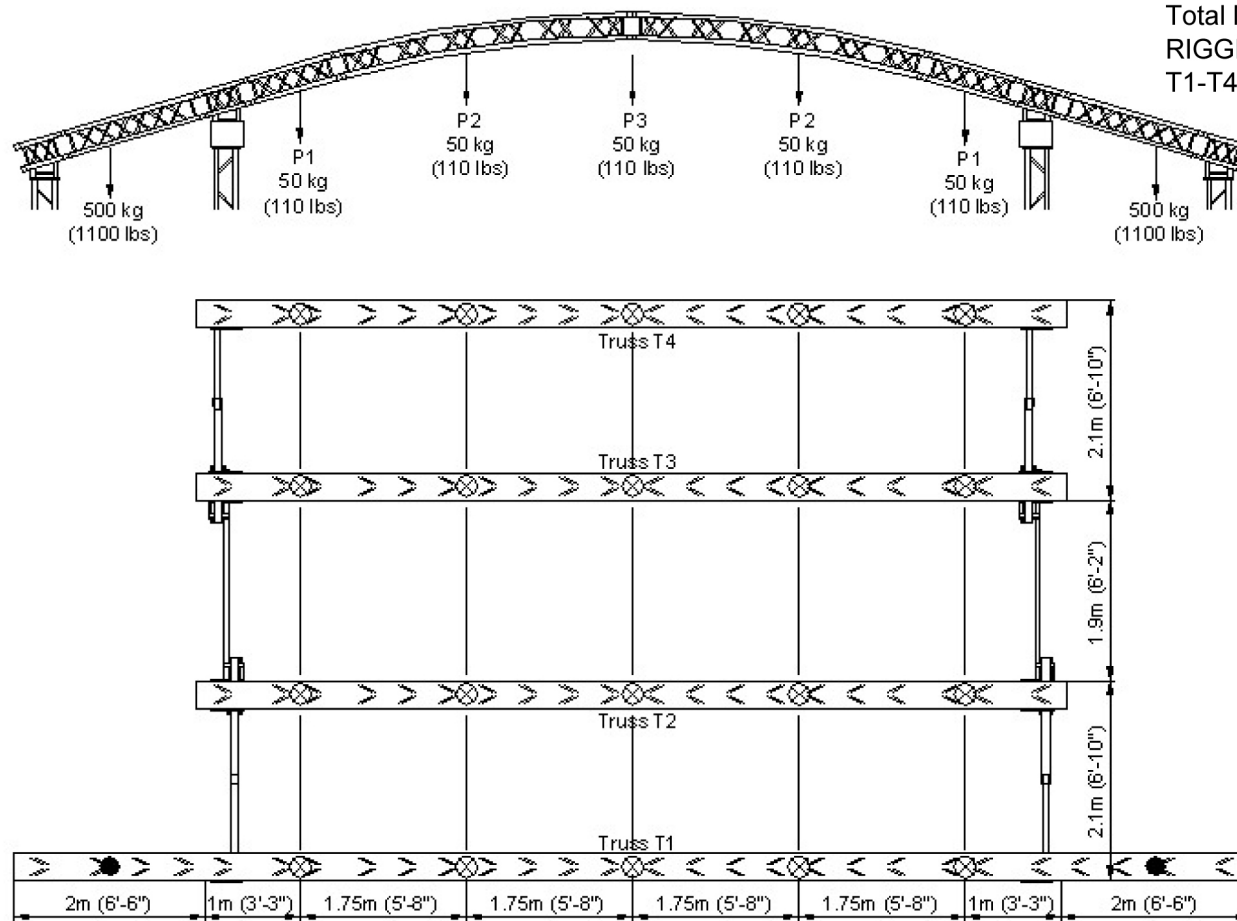
©2008 – Allrights reserved, Karl Eckart Fahrzeugbeu GmbH. Any and all forms of adaption or reproduction of this document including plans and drawings found herein, in whole or in part, are strictly forbidden without the written authorisation of Karl Eckart Fahrzeugbau GmbH.

Date: 2008-02-05
Revision 0



www.mobilestagemanufacturing.com
 100 Eads St. West Babylon, NY 11704
 (516) 882-5412
 Info@MobileStageManufacturing.com

Stagemobil XLR LOAD BEARING TRUSSES



Total Maximum 220 kg (500 lbs)
 RIGGING PATTERNS
 T1-T4: USE P1 or P2 or P3

Maximum load bearing capacity of all 4 bearing trusses 880 kg (2000 lbs)

Downstage

● Rigging point maximum capacity: 500 kg (1100 lbs)

⊗ Rigging point maximum capacity: 50 kg (110 lbs)

All loads should be evenly distributed.

Rigging Plan

Stage specifications subject
 To change without notice
 Figures are within inch or

©2008 – All rights reserved, Karl Eckart Fahrzeugbau GmbH. Any and all forms of adaption or reproduction of this document including plans and drawings found herein, in whole or in part, are strictly forbidden without the written authorisation of Karl Eckart Fahrzeugbau GmbH.

Date: 2008-02-05
 Revision 0